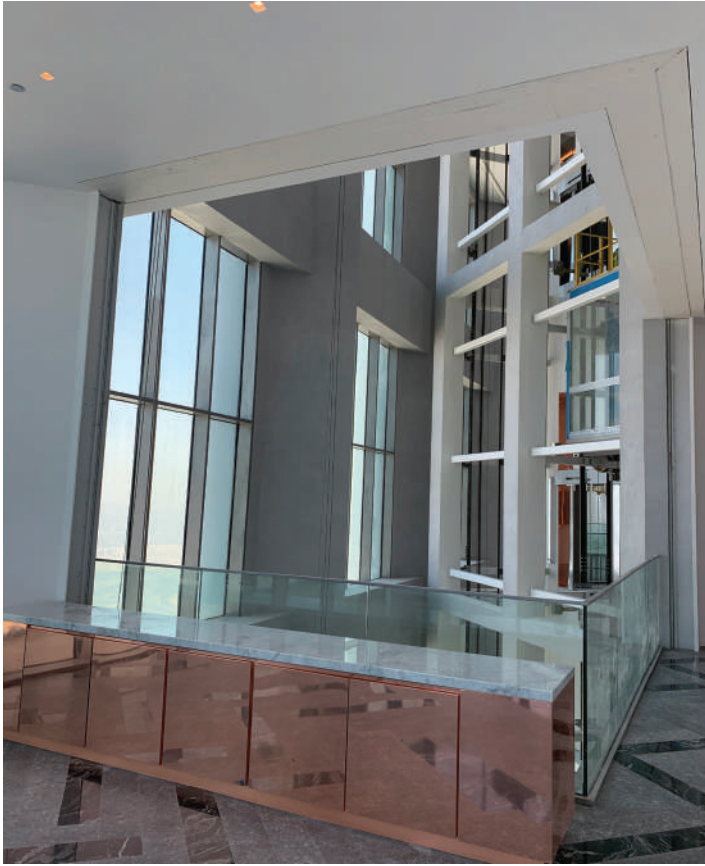




# FERCO AUTOMATIC FIRE CURTAIN - ACCORDION

**ferco**  
SHUTTERS AND SEATING

## CUTSHEET



### DESCRIPTION

Ferco Automatic Fire Curtains are life safety systems that are designed to arrest the spread of fire in a building. The assembly comprises a fire resistant fiberglass fabric stacked inside the headbox that is typically installed above the ceiling to be virtually invisible until activated. The curtain descends at a controlled speed upon receipt of signal from a fire alarm and provides resistance for up to 4 hours.

### PRODUCT ADVANTAGES

- Lightweight & Compact - Reduced headroom requirement compared to a rolling fire shutter.
- State of Art Technology - Manufactured with intricacy using advanced machinery.
- Flexible Design Solution - Meeting Bespoke requirements.
- Improved Aesthetics & Mechanics - Negates the requirement for corner support columns and in some cases, side guides.
- Ferco Gravity Fail Safe System - Guaranteed deployment of the curtains at a controlled descent rate using our gravity fail safe system. Applies under any scenario such as mains power failure and damage to control systems

### PRODUCT PERFORMANCE

Model	<b>Ferco Fire Accordion (Fire) 4 Hour</b>
Single Shaft Drive	Yes
Multiple Angles	Yes
Layouts	Open and Closed
Max width (m)	250
Max Drop (m)	12
Classification	<p><b>Ferco Fire Accordion (Fire) 4 Hour (Tested in accordance with UL10D up to a temperature ≈ 1100°C)</b></p> <ul style="list-style-type: none"> <li>• Rated up to and including 4 hr., for use in masonry wall type constructions</li> <li>• Rated up to and including 3 hr., for use in gypsum wall type constructions.</li> </ul>
Test Standard	UL 10D
Certificate No.	R40109



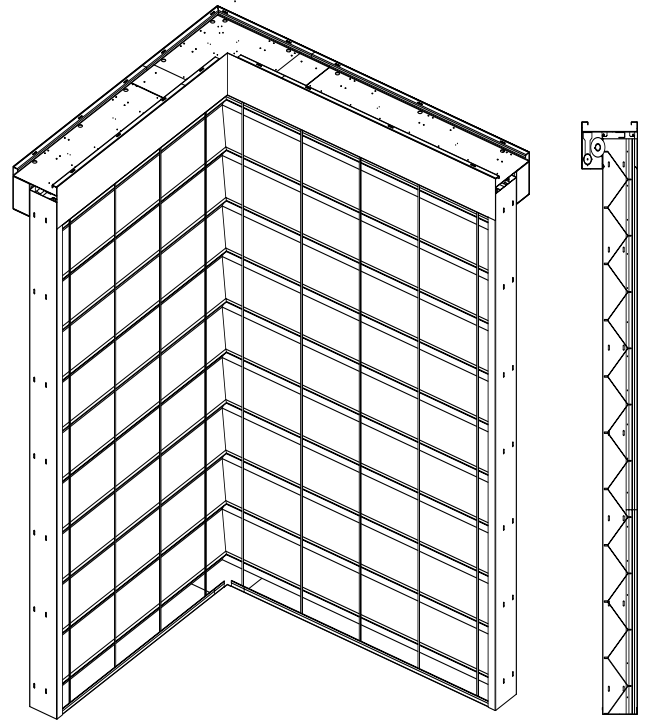


# FERCO AUTOMATIC FIRE CURTAIN - ACCORDION



## CUTSHEET

PRODUCT SPECIFICATIONS	
Fabric	Ferco Fire Accordion (Fire) 4 Hour VWG 690 - Fiberglass fabric reinforced with stainless steel wire
Headbox	Galvanized Steel
Standard Headbox Size	450 X 275mm Upto 3m 450 X 475mm 3 to 7m
Standard Headbox Material	Galvanized Steel
Side Guide Material	2 mm thick GI
Bottom tray material	1.5 mm thick GI
Motor	24V DC
Descent Rate	Synchronised at > 0.15 m/s (6"/s)
Standard Operation	Gravity Fail Safe System



### CONTROL OPTIONS

Depending on the fire strategy control options include Two stage Descent, Delayed Descent, Audio Visual Alert, Obstruction sensors and connection to the Building Management System (BMS).

### WARRANTY

A manufacturer's warranty is provided for 12 months, which will be invalidated if any element is sublet to unauthorized parties.

